

My Little Tree by FusionBeads.com



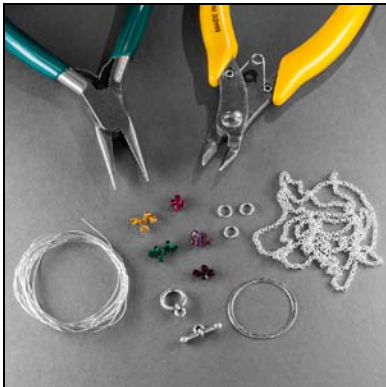
Approximate finished length: 19.5 inches

Beads and other products needed for one necklace:

- 4 - 3mm Garnet Swarovski Crystal Bicone Beads (03BI1112)
- 4 - 3mm Ruby Swarovski Crystal Bicone Beads (03BI1111)
- 6 - 3mm Emerald Swarovski Crystal Bicone Beads (03BI1117)
- 5 - 3mm Amethyst Swarovski Crystal Bicone Beads (03BI1130)
- 5 - 3mm Topaz Swarovski Crystal Bicone Beads (03BI1133)
- 1 - 28mm Sterling Silver Flat Circle Component (SS4296)
- 1 - 13.5x10mm Antique Silver Plated Pewter Anna's Toggle Clasp by TierraCast® (SP2426)
- 3 - 5.5mm Silver Plated Brass 20 Gauge Open Jump Rings by TierraCast® (SP0342)
- 19 inches - 1.9mm Silver Plated Brass Rollo Chain (CN4008)
- 5 feet - 28 Gauge Sterling Silver Dead Soft Wire (SW0126)

Tools needed to complete the necklace:

Chain nose pliers
Wire cutters
Hypo Tube Cement (TL1202)



Beading Techniques needed to complete the necklace:

Opening and Closing a Jump Ring
Covering a Component – Outer Edge

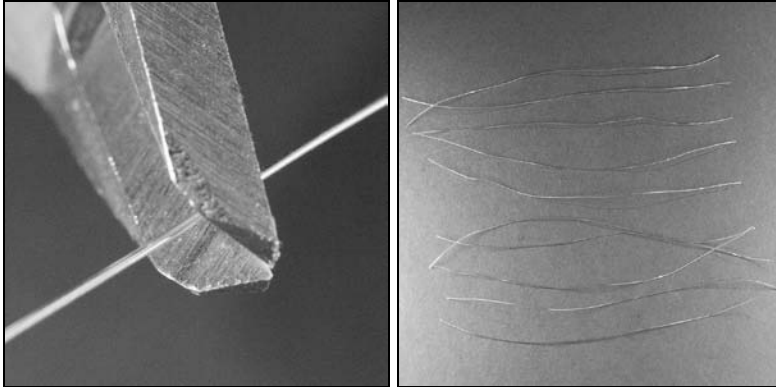
Instructions to complete “My Little Tree” necklace:

Tip

The pendant is made with a variation of the Covering a Component – Outer Edge Technique. If you are not familiar with the technique, read through the technique’s steps to get a general idea before beginning.

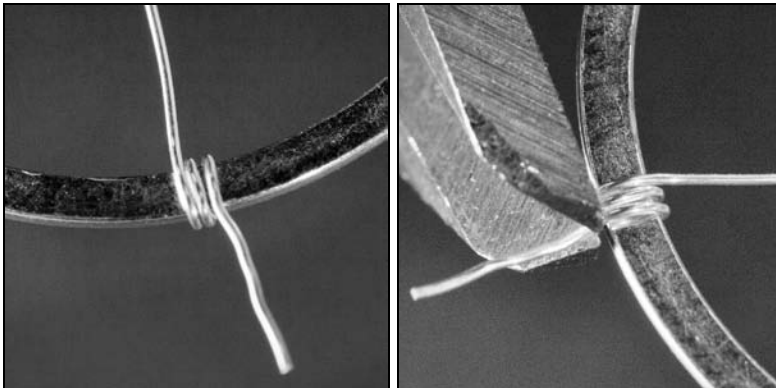
Step 1

Using wire cutters, cut 10 6 inch lengths of wire.



Step 2

Anchor one length of wire to the component (see Covering a Component – Outer Edge Technique) by wrapping one end around the component three times. Trim the wire tail close to the component.



Step 3

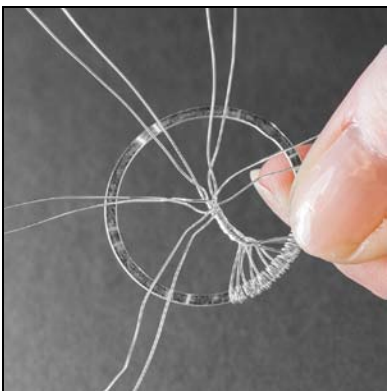
Repeat with each of the remaining wire lengths.

**Step 4**

Twist all 10 wire lengths together tightly about halfway toward the component's center, forming the tree's "trunk."

**Step 5**

Separate and spread pairs of wires away from the trunk. These wires will form the "branches."

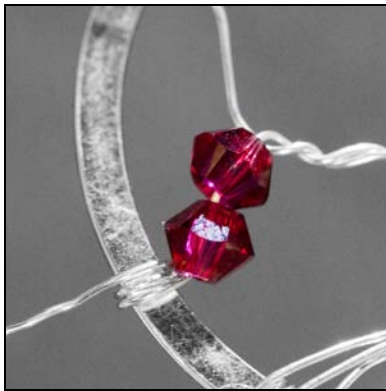
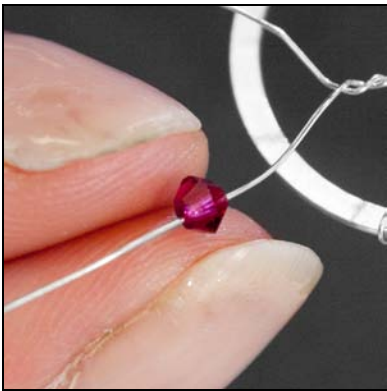


Step 6

Begin twisting one pair of wires about halfway toward the component.

**Step 7**

String two 3mm Ruby crystal bicone beads onto one wire, and anchor the wire onto the component.

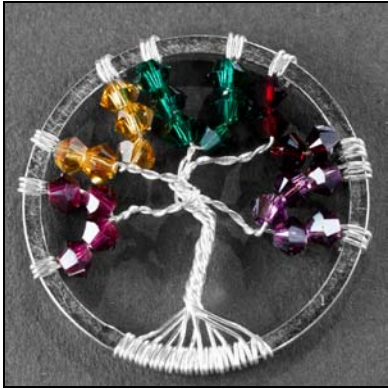
**Step 8**

Trim the wire tail close to the component.



Step 9

In the same manner as in the previous steps, continue twisting each pair of wires and stringing beads onto individual wires. Place the beads in any order you wish, or follow the sequence shown.



Step 10

Open one jump ring (see Opening and Closing a Jump Ring Technique). Use the jump ring to attach the chain to the top of the component across from the tree's "roots." Close the jump ring.



Step 11

Use one jump ring to attach one side of the toggle clasp to one end of the chain.

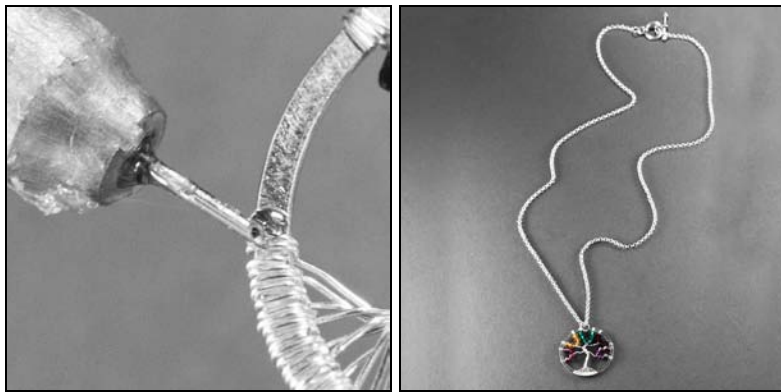


Step 12

Repeat Step 11 with the second side of the clasp and the opposite end of the chain.

**Step 13**

If wire ends create any rough spots, apply a small drop of Hypo Cement to the spot.



For step-by-step photos and instructions on these and other techniques, visit FusionBeads.com and select Beading Techniques from the top navigation bar. You'll find more Inspiration jewelry ideas at FusionBeads.com!